

COMPACT SERIES™ C15/C22

CNG System For Small To Medium Fleets



FEATURES



COMPRESSOR

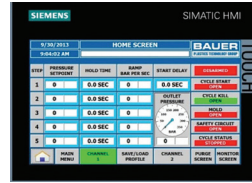
Featuring BAUER's proven C15 series and C22 multi-stage, air-cooled compressor at the heart of the system.

- › Designed for continuous duty application
- › Extremely durable and low maintenance
- › Pressure lubricated



COST OF OWNERSHIP

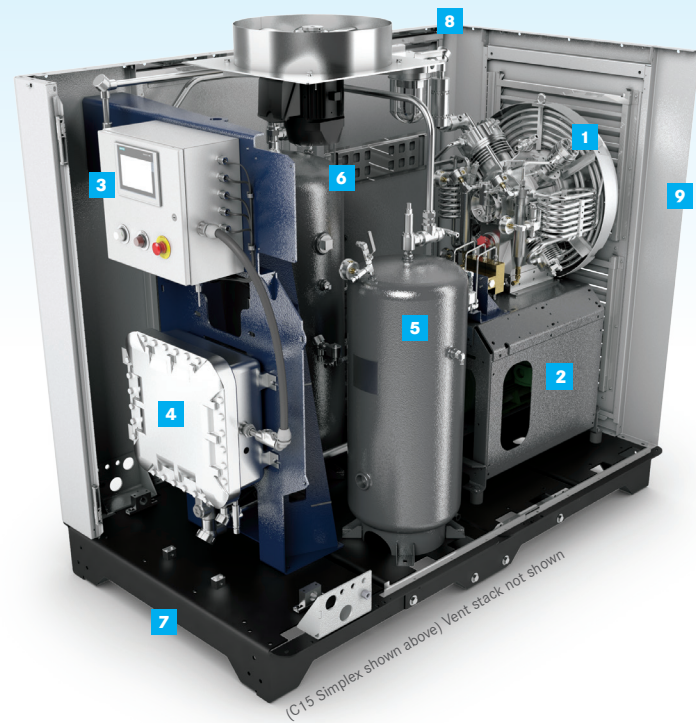
Designed for long periods between maintenance intervals and very low cost of ownership. 8000 hrs between ring changes. 30,000 hrs before major overhaul. Lifetime BAUER support.



CONTROL SYSTEM

State-of-the-art control system and intuitive machine interface makes operating the unit simple.

- › Excellent diagnostics
- › Remote interface via smartphone option
- › Online manual and operating / maintenance instructions standard



- 1 BAUER C15 (C22 ALSO AVAILABLE)
- 2 HIGH EFFICIENCY TEFC MOTOR
- 3 NEMA 4 PLC CONTROL PANEL WITH TOUCH SCREEN OPERATOR INTERFACE AND EMERGENCY STOP PUSH BUTTON
- 4 NEMA 7 STARTER PANEL
- 5 INLET BUFFER TANK
- 6 VAPOR RECOVERY TANK
- 7 PRECISION FORMED HEAVY-DUTY STEEL SKID
- 8 ENCLOSURE DESIGNED FOR DURABILITY AND ATTRACTIVE APPEARANCE
- 9 WEATHERPROOF AND RUSTPROOF POWDER-COATED GALVANNEAL ENCLOSURE (10 YEAR WARRANTY)

BENEFITS

- › **Powerful, totally integrated system** in a small footprint available in both Simplex and Duplex.
- › **BAUER'S legendary performance, quality, and reliability guaranteed**, backed by the best warranty in the industry.
- › **Integrated CNG system, both easy and economical to install.**
- › **Attractive design in a super-quiet package** (75 dB standard / 65 dB option) suitable for public view and placement in densely-populated areas.
- › **Easy to maintain**, with low cost of ownership makes the unit very economical to operate.

SYSTEM FOOTPRINT

SIMPLEX:

DIMENSIONS L X W X H inches (mm)

- › 97" x 58" x 85" (2464mm x 1473mm x 2159mm)

WEIGHT pounds (kg)

- › 3200 - 4000 lb (1066 - 1814 kg)
depending upon model and options

*Dimensions exclude vent stack **Dimensions and weight approximate



DUPLEX:

DIMENSIONS L X W X H inches (mm)

- › 139" x 57" x 84" (3531mm x 1448mm x 2134mm)

WEIGHT pounds (kg)

- › 5500 - 8000 lb (2495 - 3629 kg)
depending upon model and options

*Dimensions exclude vent stack **Dimensions and weight approximate



TECHNICAL DATA

Model	Inlet pressure		Final pressure		Capacity			Number of Stages	Running Speed	Motor				
	PSIG		BAR		CFM	M ³ /H	DGE/H			GGE/H	RPM	hp	kW	
	min	max	min	max										max
C15.2	1	5	0.07	0.34	5000	345	22	37	9	11	4	1350	20	13.3
C15.4	—	60	—	4.14	5000	345	27	46	12	14	3	1350	15	10.9
C22.0	1	5	0.07	0.34	5000	345	40	68	17	20	4	1250	30	21.7

Note: All capacities are referenced to maximum inlet pressure. Capacity is reduced if inlet pressure is less than maximum. Performance tolerance +/- 5%.

OPTIONAL FEATURES

- › High Pressure Drying
- › Cell Phone Modem with Remote Notification
- › Dispensing
- › Compressor Crankcase Heater
- › Audible Alarm
- › Interior Lighting and Infrared Gas Detector

Designed in compliance with NFPA 52 and NFPA 70 for Class 1, Division 2, Group D.

CUSTOMER SUPPORT



GLOBAL SUPPORT



SINGLE SOURCE RESPONSIBILITY



LOW COST OF OWNERSHIP



LIFECYCLE PERFORMANCE

FOR MORE INFORMATION PLEASE VISIT:
www.BauerCustomerSupport.com



SAI GLOBAL
ISO 9001
Quality